



***Takes the guesswork out of making glass knives!***

*A "load\*" indicating digital readout and micrometer positioners make it easy to get controlled, consistent breaks.*

*Uses "balanced break" method for optimum knife edges.*

To achieve consistent, controlled breaks, two aspects of the breaking process must be measurably controlled: position and load. The glass position on the GKM-2 is controlled using precision micrometers. The load is controlled through the constant feedback displayed on the digital readout as the clamping handle and breaking arm are adjusted.

The GKM-2 is specifically designed to incorporate the "balanced break" method to produce optimum knife edges. Balanced breaks require equal lengths of glass on each side of the score, along with a mechanism that applies equal load to each side, resulting in a straight break. The GKM-2 also makes it possible to achieve consistent "slow breaks" desired by many users.

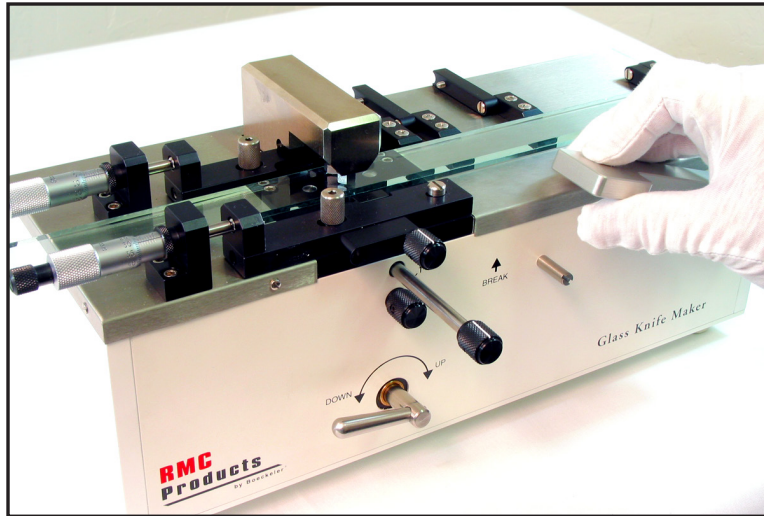
The rectangular shaped body of the GKM-2 is precision machined from solid metal components for long term stability and precision. It is designed to handle commercial glass strips ranging from 6 mm (1/4") to 8 mm in thickness, with mechanical stops for producing precise 25 mm glass squares with ease. Micrometers provide precise and reproducible alignment of the 25 mm squares for diagonal breaks. The alignment is secured by a locking mechanism to maintain your desired setting.

*\* Mechanical engineering term meaning force or weight on a structure.*

### FEATURES

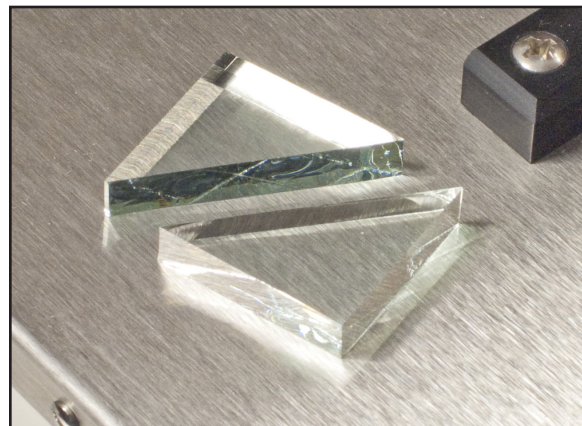
- ◆ Solid, Heavy Design
- ◆ Easily Produces Consistent, Controlled Breaks
- ◆ Digital Readout Displays Load Applied to Glass as Breaking Arm is Moved
- ◆ Produces Knives Up to 8 mm Wide
- ◆ "Balanced Break" Method for the Sharpest Knives
- ◆ Micrometer Positioners
- ◆ Built-in Mechanical Stops for Easy Positioning
- ◆ Precision Mechanism Supports "Slow-Break" Technique

# SPECIFICATIONS



## Dimensions

Width:	360 mm (14 inches)
Height:	160 mm (6.3 inches)
Depth:	170 mm (6.8 inches)
Weight:	13.6 kg (30 pounds)



## Ordering Information

76011	Glass Knife Maker, complete with the following: a. safety glasses b. brush c. instruction manual & video d. replacement scoring wheels and axle e. package of 6 mm glass strips (316995)
316995	6 mm x 1" x 16" (25.4 mm x 406 mm) glass strips, package of 30
316996	8 mm x 1" x 16" (25.4 mm x 406 mm) glass strips, package of 24

**Boeckeler Instruments, Inc.**

4650 S. Butterfield Drive • Tucson, Arizona 85714 USA

Phone: 520.745.0001 • Fax: 520.745.0004 • E-mail: [info@boeckeler.com](mailto:info@boeckeler.com) • [www.rmcbocckeler.com](http://www.rmcbocckeler.com)

© 2016 Boeckeler Instruments, Inc. Boeckeler is a registered trademark of Boeckeler Instruments, Inc., Tucson, Arizona. All other trademarks are the property of their respective owners. All specifications subject to change without notice.